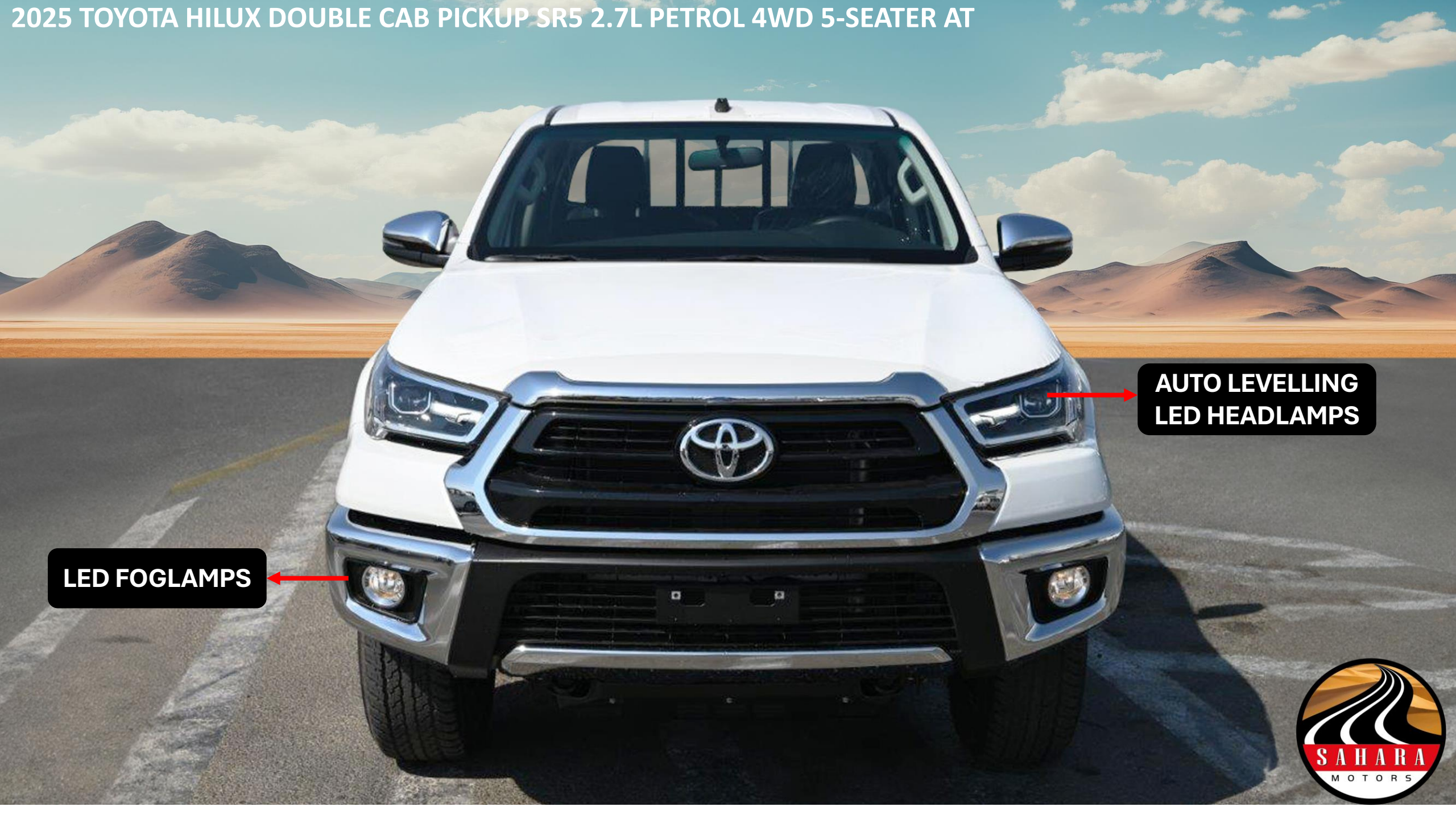


**NEW**  
**2025 HILUX**

**DOUBLE CAB SR5 2.7L PETAT**



# 2025 TOYOTA HILUX DOUBLE CAB PICKUP SR5 2.7L PETROL 4WD 5-SEATER AT



**AUTO LEVELLING  
LED HEADLAMPS**

**LED FOGLAMPS**



# 2025 TOYOTA HILUX DOUBLE CAB PICKUP SR5 2.7L PETROL 4WD 5-SEATER AT



**BODY STRIPE**

**17" ALLOY WHEELS**



# 2025 TOYOTA HILUX DOUBLE CAB PICKUP SR5 2.7L PETROL 4WD 5-SEATER AT

**DECK GUARD FRAME  
WITH STOPPER**



**SIDE VIEW MIRROR  
WITH INDICATORS**



2025 TOYOTA HILUX DOUBLE CAB PICKUP SR5 2.7L PETROL 4WD 5-SEATER AT

BED LINER

TOYOTA

HILUX  
SR5

REAR STEEL STEP  
BUMPER





**LED ROOM LAMP**

**COOL BOX**

**FABRIC SEATS**





**ARM REST WITH  
CUP HOLDER**





**MULTI INFORMATION  
DISPLAY**

**POWER STEERING  
WITH CONTROLLING  
SWITCHES**







**CURISE CONTROL**

**AIR BAGS DRIVER +  
PASSENGER & KNEE FOR  
DRIVER**



**2025 MODEL TOYOTA HILUX DOUBLE CAB SR5 2.7L PETROL 4WD 5-SEAT  
AUTOMATIC TRANSMISSION**

**MODEL CODE-TGN126L-DTTHKV**

**ENGINE-2TR FE, 2.7L V4, 16-VALVE, DOHC, DUAL VVT-i**

**TRANSMISSION AUTOMATIC**

**EXHAUST EMISSION CONTROL EURO 4**

**FUEL TANK CAPACITY 80L**

**SEAT 5 Seaters**

**FR. SUSPENSION DOUBLE-WISHBONE**

**RR. SUSPENSION LEAF SPRINGS RIGID AXLE**

**STEERING 4-SPOKE – SYNTHETIC UTHRANE + MANUAL**

**TILT + TELESCOPIC STEERING**

**ABS+VSC+HAC+TSC**

**POWER STEERING**

**AIRBAGS DRIVER + PASSENGER, KNEE for DRIVER**

**AUDIO AM/FM**

**SPEAKERS 06**

**BLUETOOT**

**STEERING CONTROL AUDIO AND TEL AND VOICE +**

**MID-HISILVER**

**TIRE SIZE 265/65R17**

**ALLOY WHEELS-BLACK COLORED**

**OVER-HEAD CONSOLE**

**POWER WINDOWS**

**FABRIC SEATS**

**DUAL AUTO AIR CONDITIONER**

**PUSH ENGINE START / STOP BUTTON**

**WIRELESS DOORLOCK**

**CRUISE CONTROL**

**WOODEN PANEL**

**LED ROOM LAMP**

**ILLUMINATION CONTROL**

**MULTI INFORMATION DISPLAY**

**LED HEADLAMP, AUTO HEADLAMP LEVELLING**

**CHROME OUTSIDE MIRROR with TURN SIGNAL AND RECTRATABLE**

**CHROME INSIDE DOOR HANDLE**

**FRONT LED FOG LAMP**

**CHROME OUTSIDE DOOR HANDLE**

**BODY STRIPE**

**REAR STEEL STEP BUMBER, FRONT BUMBER (STEEL)**

**BED LINER**

**COOL BOX**

**FOLLOW ME HOME**

**LED HIGH MOUNT STOP LAMP**

**CHROME RADIATOR GRILLE**

**DECK GUARD FRAME WITH STOPPER**

**SMART KEY**

**WIPER INTERMITTENT TIME ADJUSTMENT + MIST**

**BED LINER**

**BLIND SPOT SYSTEM**

# Contact Us

**Address**

Block 3, Showroom no.25, Al Awir, Ras Al khor  
Auto Market, Dubai, UAE

**Land Line**

+971 43332623

**Email**

[info@saharamotorsuae.com](mailto:info@saharamotorsuae.com)